

For information on how to care for your blouses & scarf please follow the instructions printed inside this leaflet.

In the unlikely event that your garment has some loose thread ends the first rule is NOT to pull them, you MUST ALWAYS cut them about 2mm away from the garment face, do not cut them any shorter.

If you decide to pull a thread end, in many instances it will create a worse problem.

The stitching types used in certain areas of garments are created in a way that pulling at a thread can cause it to unravel. e.g. hem stitching, button stitching, buttonhole stitching and some seam stitching.



Uniforms for Work Limited
Unit 7, Lister Park
Green Lane Industrial Estate
Featherstone
West Yorkshire
WF7 6FE

Tel: 01977 707010

Fax: 01977 790698

Web site address:

<http://www.uniformsforwork.com>

contact us by email: sales@uniformsforwork.com



Ladies wear

How to Care for your New Uniform Blouse
and Scarf



Blouse

As soon as you receive your blouses carefully remove the packaging, it is recommended that you wash them before wearing them.

Washing:

Do not bleach or use whiteners, this will affect the colours on the embroidery even though your blouses are white, use colour safe brighteners only.

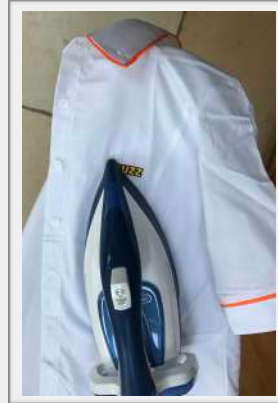
Do not use fabric conditioners (check your detergent does not have a conditioner in it or bleaching agents).

Only wash your blouses with other white items.

Before washing, fasten all front buttons, undo the collar buttons, then turn the blouse inside out.



Prior to washing your blouse at 40 degrees, we suggest that any heavily soiled areas (such as the neck area) are pretreated with detergent to help remove the stubborn stains.



Your blouses can be tumble-dried but only on a cool setting, do this with the blouse still fastened and still inside out.

Remove the blouse from the dryer whilst it is still damp and also iron it whilst damp. Use a steam iron on a warm setting – not a hot setting.

For best ironing results unbutton the blouse and then iron on the face side of the blouse. Only fasten the collar buttons after you have pressed the collar and finished pressing the blouse.

Keep your iron face clean so it does not leave dirty marks on your blouses after ironing.

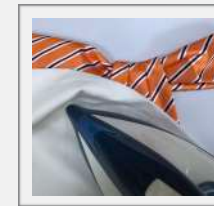
Scarf

Your scarf can only be hand washed or dry cleaned. If hand washed then leave it to dry naturally.

Do not bleach or use whiteners, Do not use fabric conditioners (check your detergent does not have a conditioner in it or bleaching agents).

If you must iron your scarf, do it with a warm iron, protecting it with a cotton cloth between the iron and the scarf.

It is recommended you only press the bow tails as shown in the photo.



If you don't have a cotton cloth – a non fluffy tea towel or a pillow case is a good alternative (please make sure it is cotton).

If you spill something on it, sponge it clean as soon as you can.

Your scarf CAN be folded when you are not wearing it, but try to keep the bow tails flat.

It is advised you keep at least 1 stud fastened and hang it around the hook of your blouse hanger when you are not wearing it.

